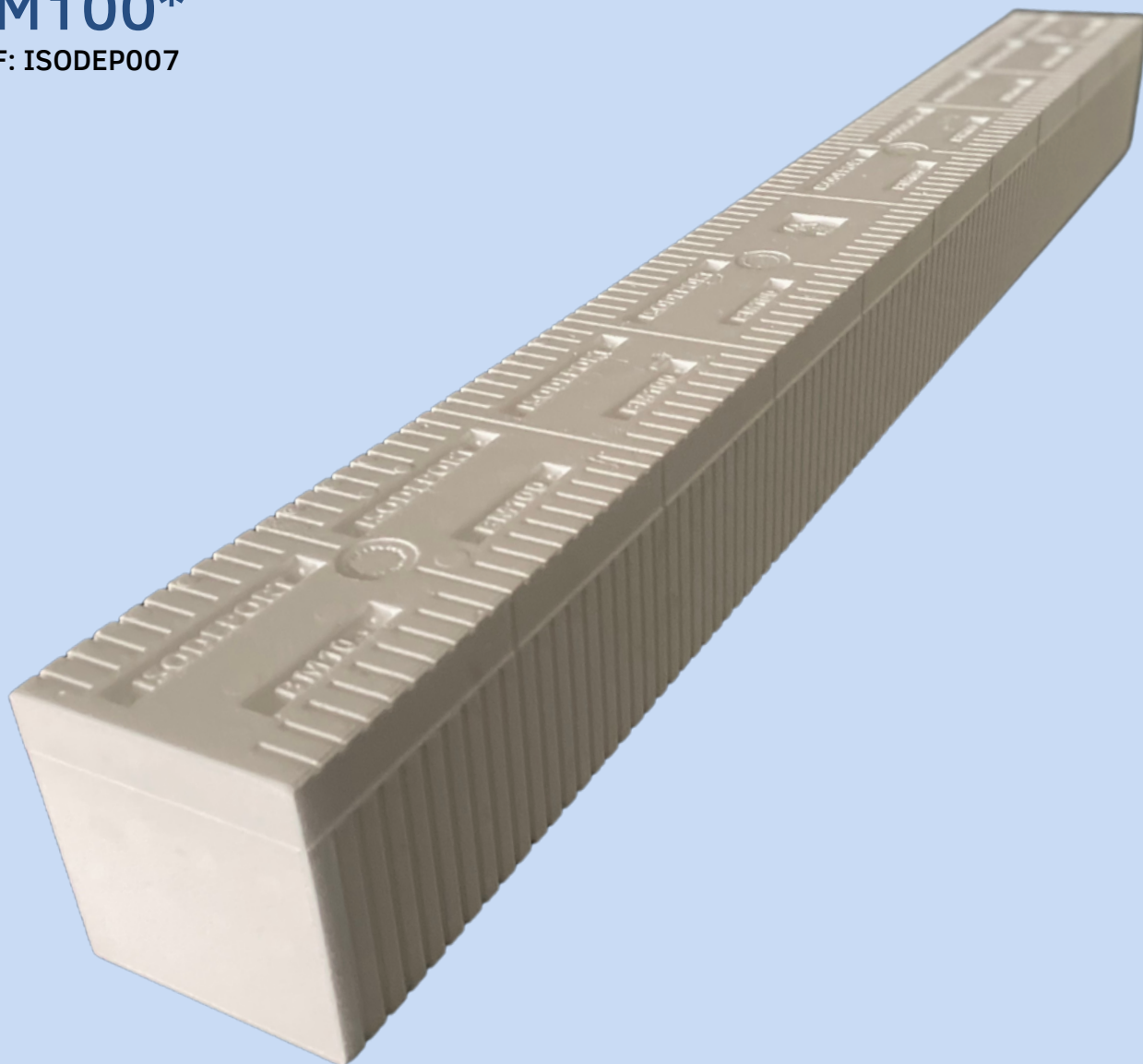


Mounting block

BM100*

REF: ISODEP007



- ☒ Quick and easy assembly
- ☒ Made in France
- ☒ A product dedicated to the professionals of the sector



DIMENSIONS

Height/Width : 100 mm* 100 mm

Length : 1000 mm

DESCRIPTION

ISODEPORT BM 100 mounting blocks are made of high-density expanded polystyrene.

They are fixed directly into the thickness of the insulation, which can be EPS, rock wool, wood fiber, or cork. They are designed for fixing light loads.

SCREWING

To fasten the screw into the mounting blocks, use screws with cylindrical threads, such as wood screws.

The screwing is done as close as possible to the center of the mounting block.

Mounting blocks are made to fix medium-low and fixed loads, e.g., for light points, letterboxes, drainage pipe clamps, etc., heavy loads must be anchored in the masonry anchored in the masonry.

Mounting blocks of ISODEPORT BM 100 must be clad with conventional cladding materials such as a gypsum coating, the pressure forces that are generated as a result of the the pressure forces that are generated when inserting the mounting block.

ADVANTAGES

- ✓ The BM100 mounting block is suitable for all insulation thicknesses.
- ✓ Cutting the mounting block is facilitated thanks to drawing lines every 10 mm.
- ✓ Easy to cut with hot wire or hand saw.

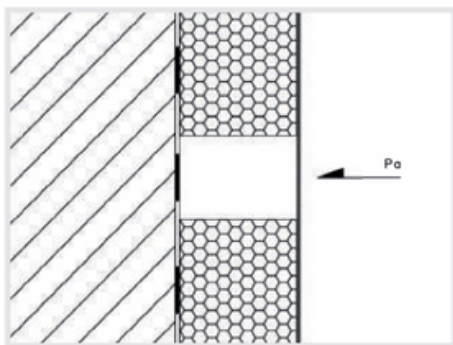
STEP BY STEP



TECHNICAL DATA

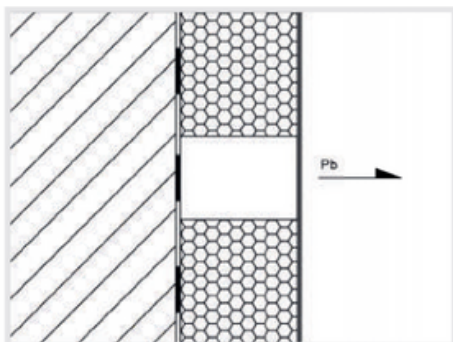
☑ Fire behaviour according to EN 13501-1: E

☑ Thermal conductivity: 0.047 W/mK



Recommended operating load :

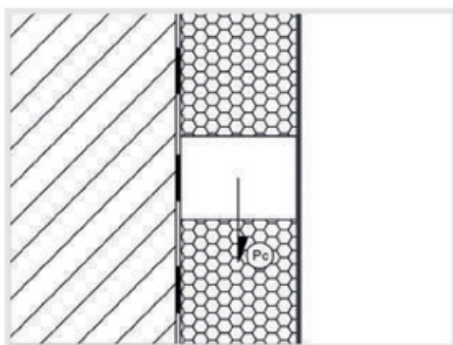
Compressive force P_a across the entire surface of the mounting block 100 x 100 mm : 1.00 kN.



Recommended operating load :

Tensile force P_b of mounting block 100 x 100 mm in :

- EPS insulation boards : 15 kg/m³ 0.21 kN
- Rock wool insulation boards : 0.15 kN

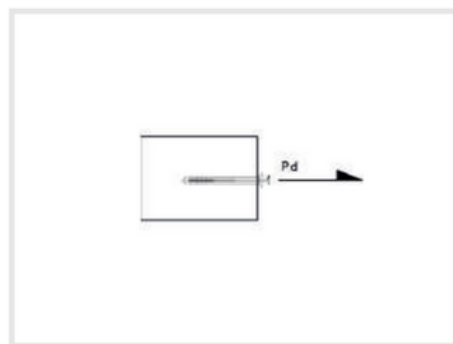


Recommended operating load :

Transverse force P_c of mounting block 100 x 100 mm in :

EPS insulation boards : 15 kg/m³ 0.26 kN

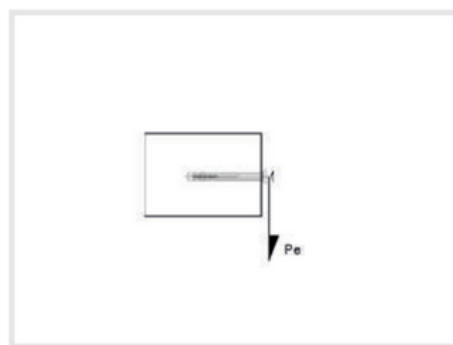
Rock wool insulation boards : 0.19 kN



Recommended operating load :

Tensile force P_d of the 100 x 100 mm mounting block on screws : 0.25 kN

Screw diameter 7 mm and installation depth : 60 mm



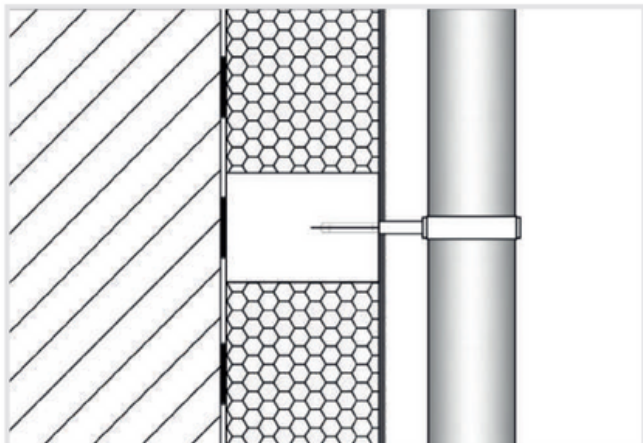
Recommended operating load :

P_e transverse force of the 100 x 100 mm mounting block on the screws : 0.12 kN

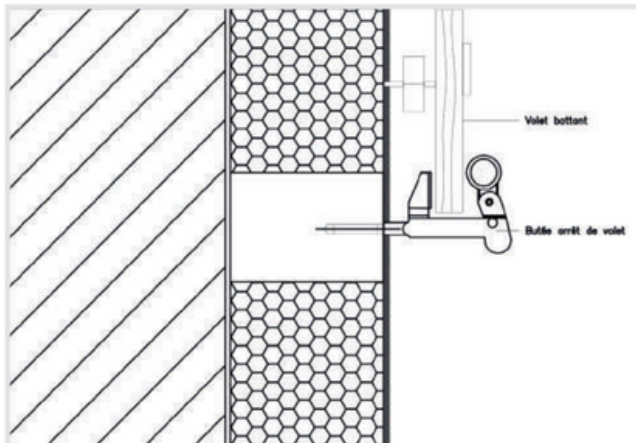
Screw diameter 7 mm and installation depth 60 mm

EXAMPLES OF APPLICATIONS

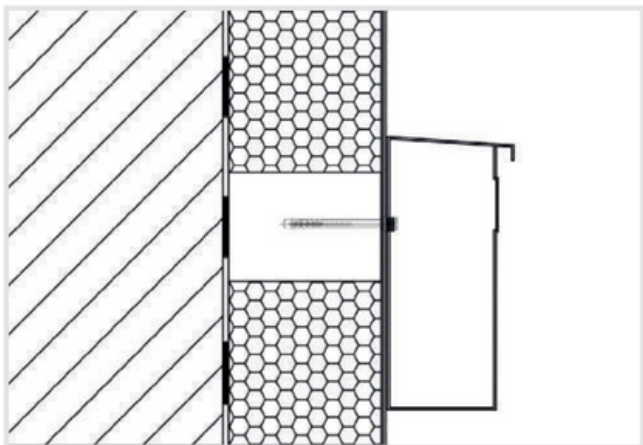
DOWNPIPE CLAMPS FOR PIPES



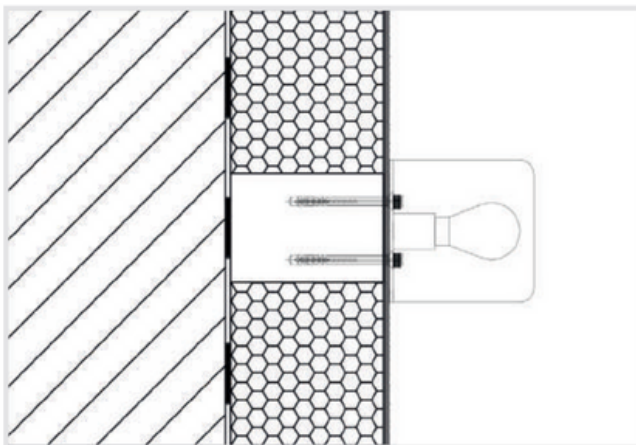
MARSEILLE STOPS / UPPER OR LOWER SHUTTER STOP



LETTERBOX



LIGHT POINTS



ITE-SHOP

By professionals for professionals

Géo Technic - Impasse Teynier 31100 TOULOUSE

www.ite-shop.com - contact@ite-shop.com

SAS with a capital of di 100 000 € - SIRET : 532 890 290 00051 - NAF : 4673A